

Bass Drums

8-8-16

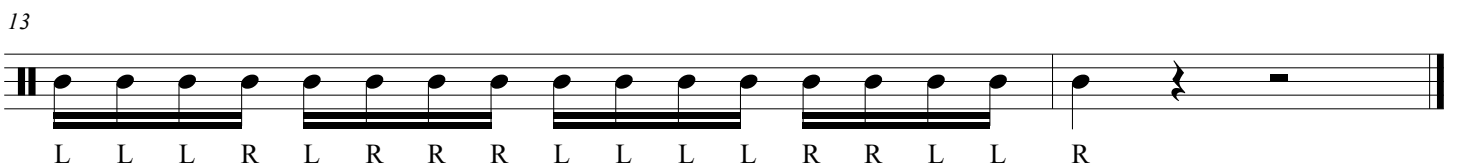
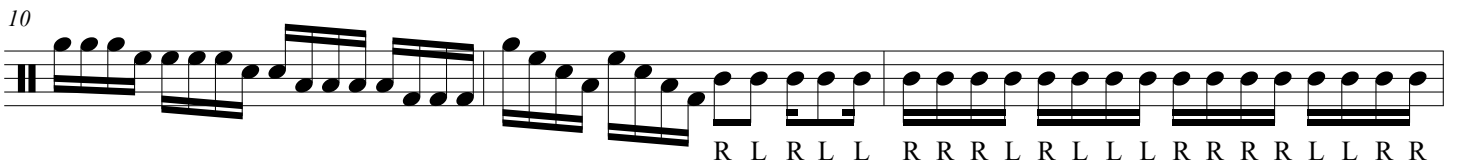
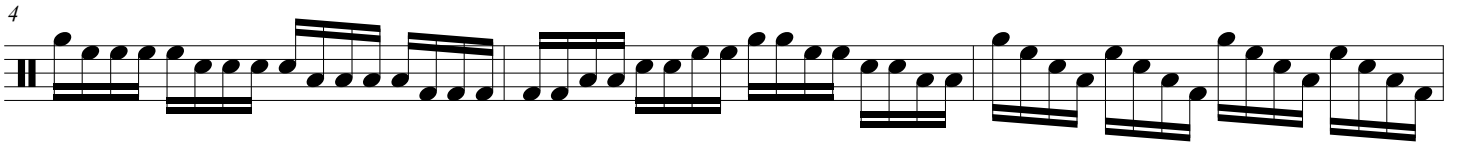
Variations:
-Fortissimo
-Piano
-Crescendo
-Decrescendo

BPM 80-186

The image shows two staves of musical notation for a bass drum part. The first staff begins with a treble clef, a key signature of one sharp (F#), and a 4/4 time signature. The rhythm is indicated by the title '8-8-16'. The notation consists of eighth and sixteenth notes, with some notes beamed together. The second staff starts with a measure number '6' above the first note. The notation continues with similar rhythmic patterns, ending with a double bar line.

Stick Control

BPM 100-128



Bass Drums

BPM 112-180

Triplet Diddle

12/8

4

7

10

13

16

Bass Drums

Night Train Funk

BPM 92-180

The musical notation is presented in three systems on a single staff. The first system is in 7/4 time and contains 14 measures. The first 7 measures are marked with an 'R' and the last 7 measures with an 'L'. The second system is in 4/4 time and contains 10 measures, all marked with an 'R'. The third system is in 4/4 time and contains 4 measures, all marked with an 'R'. The notation uses quarter notes and eighth notes with accents (>) above them. The first system includes some beamed eighth notes in the final measures.

Paradise V.2

J. Fernando Diaz

Snareline

Quint Toms

Bass Drums

S.Dr.

Quints

B. Dr.

S.Dr.

Quints

B. Dr.

f R r r r r L l l l l R l r r l l L r l l r r L r l l L l l l l R r r r r

f R r r r r L l l l l R l r r L r l l r L L r L r r L l l l l R r r r r

f R l r r L r l l R l r r L r l l R l r r

L r l l r r L r l l r r L r l l R l r r l R l r r l R l r r L r l l L r l l r L r l l L r l l

L r l l R l r r l R R l R l r R l l R l l R l R l R l r r L r l l R l l R l r r L r l l

L r l l R l r r l R l r r l R l r r L r l l r r L r l l R l r r L r l l R l r r L r l l

R l r r l l R l r r l l R l r r L r l l r r L r l l r r L r l l R l r r L r l l R l r r L r l l

R r r r r L l l l

10

S.Dr.
R l r r L r l l R l r r L r l l R l r l r r L r l r l l R l r r L r l l R l r r L r l l r r

Quints
R l r l r l r r L r l r l r l l R l r l r r L r l l R l r r l l R

B. Dr.
R r r L l l R r r L l l R l r r L r l l R l r r L r l l

13

S.Dr.
R

Quints
L

B. Dr.

Dynamic/Expression Definitions

<i>p</i>	3" (Level 1)	>	Accent (Notes that come above tap height)
<i>mp</i>	6" (Level 2)	^	Accent (Down stroke/Ping shot)
<i>mf</i>	9" (Level 3)	—	Tenuto (slight accent "emphasis") (Level 2)
<i>f</i>	12" (Level 4)	z	Buzz (Multiple bounces) Long or short in duration
<i>ff</i>	15" (Level 5)	Vertical	